

# CERTIFICATE OF LOCATION OF GOVERNMENT CORNER

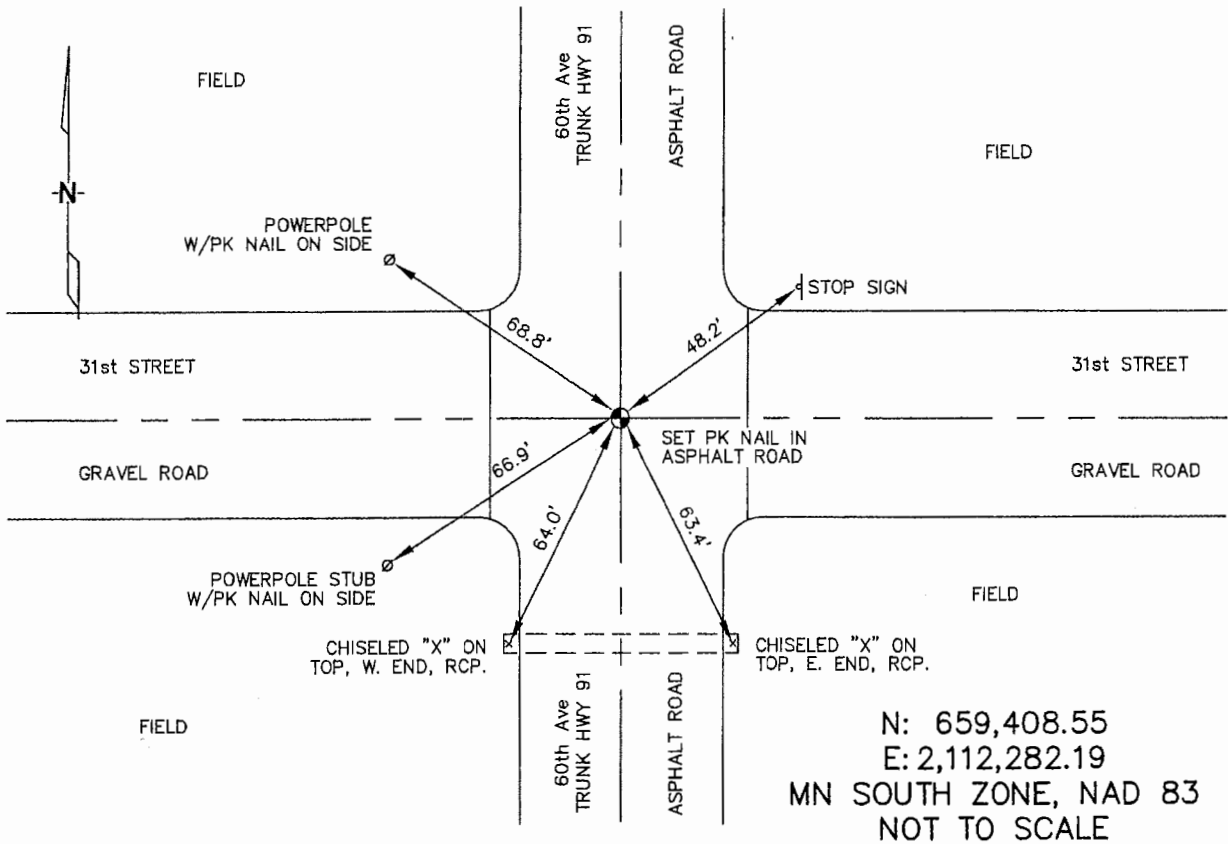
SOUTHWEST Corner of Section 18, Township 105N, Range 42W, 5TH P.M.

STATE OF MINNESOTA, County of MURRAY

At the corner location shown on the sketch :

- On \_\_\_\_\_ found \_\_\_\_\_
- left monument as found,  lowered monument,  removed monument (explain)
- On 3/22/2006 set A PK NAIL IN C/L OF ASPHALT PAVEMENT AT INTERSECTION OF ROADS.

Sketch of reference ties



Statement of evidence relative to this corner location is on back page

I hereby certify that this document and the data contained herein was prepared by me or under my direct supervision.

Thomas W. Zeff 5/19/06  
 Thomas W. Zeff Date  
 Registration No. 44563

- Land Surveyor,  Professional Engineer
- County Surveyor,  County Engineer

OFFICE OF THE COUNTY RECORDER

County of \_\_\_\_\_

**SEP 28 2006**

I hereby certify that this document was filed in the Co. Recorders office at \_\_\_\_\_ M. on the \_\_\_\_\_ day of \_\_\_\_\_ A.D. , 20

County Recorder James V. Johnson  
 By \_\_\_\_\_, Deputy

DOCUMENT NO. \_\_\_\_\_

STATEMENT OF EVIDENCE:

SOUTHWEST CORNER, SECTION 18, T. 105 N., R. 42 W.,  
MURRAY COUNTY, MINNESOTA

- 1861 J.W. Myers, US. Deputy Surveyor, monumented west range line.
- 4/29/1901 Murray Co. placed a 6"X8"X14" stone, no ties.
- 9/20/1927 Murray Co. placed 2 stones, on top of original stone.  
Ties: NW-50' to fence corner;  
NE-48.0' to fence corner;  
SE-44.8' to fence corner;  
SW-45.8' to fence corner.
- ? Date MN DOT, R/W Map for Trunk Highway 91, calls for "stone monument in place, at intersection of roads, north, south, east & west; referenced as: 1.0' left at POT 196+86.0."
- 3/23/2006 Uiteig Engineers, Inc., Survey Crew, Dennis Lavallie Party Chief, found nothing. Set a PK nail at the C/L intersection.  
Ties: NE-48.2' to steel post, Stop sign;  
SE-63.4' to chiseled "X" on top, E end, RCP;  
SW-64.0' to chiseled "X" on top, W end, RCP;  
SW-66.9' to PK nail in stub power pole;  
NW-68.8' to PK nail in power pole.